



IMAD

HUSSEIN

FAKHRY



ARCHITECTS  
IMAD and HUSSEIN FAKHRY



ARCHITECTURAL GROUP  
**'KEU**

25 Years

25  
*Years*

ARCHITECTURAL GROUP

**'KEY'**



## VISION

**KEY's** vision is to surge ahead at the vanguard of ground-breaking architectural and construction groups, providing our clients with only best-in-class services with the aim of outrunning their requirements and expectations. In this perspective, we are conveying all our efforts toward successful approaches, evolving as a major group in this domain not only in the Lebanese market but also in the Ghanaian one, and throughout the African regions.

## MISSION

**KEY's** mission focuses on turning visions and ideas into reality. We never overlook details all the way through the operations' process, because we believe that "the difference between something good and something great is attention to detail". We are constantly inspired by must-haves and trends in our domain, and commit all our efforts to ensure the costumers' satisfaction while devoting time, and offering them prices in line with their budget and requirements. In fact, one of our cornerstones is maintaining the highest level of customer satisfaction, which eventually fosters credibility and long-term confidence.

## COMPANY STRUCTURE

Our highly dedicated staff is immersed in the fields of architecture and construction, as well as their affiliates, with specialist skills gleaned over many years, allowing us to achieve landmark projects.

**KEY** family consists of about fifty full-time employees in Lebanon, Ghana and Abidjan, including six main architects, along with a managerial, marketing, accounting and design personnel, all recruited based on a strong academic background and distinguished professional expertise.

we offer bespoke and personalized services, fuelled by a talented and devoted staff of **KEY's** vital arms: **KEY** Architectural Group & **KEY** Architectural Company Limited.

Eight distinct departments work harmoniously to achieve the efficiency and success of our business:

- 1- Board of Directors
- 2- Management and Administration Department
  - Managing Director Office
  - Support Office:
    - Financial Controller
    - Human Resources Manager
    - Graphic Designer
    - Marketing Executive
    - Legal Officer
    - Purchasing Executive.
    - Internal Audit Officer
- 3- Marketing and Project Development Office
- 4- Design Studio
- 5- Quantity Surveying & Projects Costing department
- 6- Project Management
- 7- Accounting Department
- 8- Contracting: **KEY** Contracting, the Legal entity





### 1- Board of Directors

**KEY's** Board of Directors is the resourcefully knowledgeable and genuinely experienced brain which shapes the company's vision and sets its mission and objectives. Its members possess a varied awareness and understanding about the business and its competition. They constantly seek to expand the scope of architecture, assess the operations and the projects, determine short-term and long-term strategies, and eventually offer advice and direction at all levels.

### 2- Management and Administration Department

The management department ensures the efficient running of the company and handles project coordination, personnel matters and internal audit issues. It's foremost target is to ensure a smooth performance of the business affairs and tasks, and the implementation of **KEY** projects, in line with its policies and under quality guidelines.

### 3- Marketing and Project Development Department

Our top priority being **KEY's** on-hand and potential clientele, we aim to maintain a strong relationship with our trusted contacts, extend our existing network, and eventually develop a wide-ranging portfolio of repeat clients. The team's objective is to acquire a better grasp and understanding of the customer's needs, vision and expectations.

Our scope of work includes:

- › Looking for opportunities and potential properties for development.
- › Securing lands, working on programs and concepts, as well as liaising with the design studio.
- › Considering potential investors.
- › Establishing a legal entity for every project or property.
- › Launching the development and business process.

### 4- Design Studio

Ideas and visions are turned in here into explicit distinct images. Run by a skilled and efficient staff of experienced architects and designers, this department conceptualize, develop and design new projects, then generates visuals in the form of systematic plans, elevations, blueprints, three dimensions, & sketches for the structural design and decoration of your dreamed construction.

These means help alleviate our clients worry about what to expect during waiting time, and allow them to participate in realizing the project of their dreams. As part of our commitment and responsibly innovative approach, we only offer bespoke and personalized services.

Regarding the technical designs we entail in the execution of any architectural, decoration and/or landscaping project, **KEY** liaises with three prominent sister companies, known for living up to their standards and providing world-class know-how and services in electrical, mechanical and structural engineering.



### 5- Quantity Surveying & Projects Costing Department

**KEY** prides itself to be a one-stop architecture firm focused on providing its clientele with innovative and genuine solutions all through the maturity of a project, meticulously following up our mission's different facets: architectural, technical, construction feasibility, and financial viability which leads to in-depth value engineering exercises throughout the plan's lifespan. Our committed team sees to it that it covers the project's financial framework through:

- › Preparing the Bill of Quantities and Specifications for every project, in order to have it priced.
- › Preparing Tender Documents whenever the client wishes to contract his project by tender processing.
- › Pricing projects whenever **KEY** Contracting Ltd is invited to participate in a tender.
- › Preparing and vetting Interim Payment Certificates for projects throughout the construction phase.
- › Cost and budget controlling, as well as managing sub-contractors.

### 6- Project Management

Each project is managed from the ground-up by a skillful and substantially experienced staff, covering all phases of the project ranging from initiation, contracting, planning, to execution, and closure.

The backbone of our operations is, by all means, supervision. It guarantees us and our clients that the project, processed in-house or contracted out, is appropriately overseen and ran during all its life cycle. A **KEY** representative architect visits the site at least twice a week, monitors the plan's progress, supervises the quality of the work and delivers progress reports, which enables us to gauge our client's level of satisfaction.

We ensure that the implementation phase is undertaken within the framework of specific professional standards to achieve the "three parameters" for a successful project.

- › Quality: respecting all quality control processes.
- › Time: securing time planning & time management.
- › Budget: Managing cost control, value engineering and cash flow.

### 7- Accounting Department

**KEY's** rooted experience and the depth of knowledge in architecture and contracting fields are the catalysts stirring up our sharp and client-oriented team to provide specialized accounting. As a matter of fact, our personnel partner the clients to interpret their financial features, thus helping them make better decisions. They seek not only to provide superior service but also maintain the highest ethical standards.





### 8- Contracting: KEY Contracting, the Legal entity

As part of our turnkey solutions, **KEY** Contracting Company which is **KEY**'s third fundamental wing indeed, offers contracting services for both in-house and outsourced designs. **KEY** offers contracting services for both in-house and outsourced designs. In the latter, our team prepares a cost estimation for the project at hand, and tenders a quotation. In the event of an agreement, plans are carried out under our stringent supervision, responsibility and control. The company's plethora of experience and resources in construction, renovation, and decoration strengthens our position as high value-added service providers to successfully and skillfully handle any project.

### TURNKEY PROJECTS

From intangible ideas, all the way to handing you the key to your finished project, we grant our clients a professional attitude, a substantial experience, and a qualitative knowledge. Following up timing, scheduling, planning, architecture, design, and coordination, our proficient team will deliver a fully-equipped facility, for your immediate occupancy and operation.

### A BRIGHTER TOMORROW

At **KEY** we believe that progress and eventually success can only be reached with efforts. With our efforts, the future will see us trading new heights and reaching greater goals in the business of architecture and design. And with a portfolio growing rapidly and more projects being acquired, **KEY** will endeavor to stay appraised and in tune with the latest developments in the industry, looking ahead for the newest horizons and building up achievements from one milestone to another.





# SkyLounge

RESIDENCES



Where charm dwells in the efficient land use, where geometric design reflects inspirational taste, where colorful skin instills the structure with exquisite elegance, where lush green silhouettes draws on the serenity of nature, *where identity becomes a signature.*

Location: Osu, Accra, Ghana  
 Total Built Up Area: 11,680m<sup>2</sup>  
 Scope Of Work: Turnkey Project





Branded and prestigious, **AKER** is the height of designer chic... Infused with innovation and style, this sensation is insightfully mastered and flawlessly executed to offer groundbreaking office spaces tailored to be a select and practical union of professional quarters and exceptionally-skilled architectural designs.



# AKER ENERGY OFFICE

CORPORATE

**Function: Office Fitout**

**Location: Airport City, Ghana**

**Total Build Up Area: 2,150 sqm**

**Scope Of Work: Office Fit Out, Design & Build**





Infinity

Luxury Apartments

Location: Labone, Accra, Ghana  
Total Built Up Area: 4,360m<sup>2</sup>  
Scope Of Work: Turnkey Project





Opulent edifice with tropical greenery climbing along refined cladding materials towards cantilevered roofs, a benchmark of prestigious architecture reaching out value-adding perspectives and lavishing lifestyle.



Infinity

Luxury Apartments

Pushing the boundaries, with a U-shape concept blending with the valley's buzzing verdure, to *meet post-modern vogues and immersive distinction.* Designing a luxurious interior which inspires a ravishing sensation, to feast your eyes.





# PEDUASE VALLEY RESORT

Location: Aburi, Eastern Region, Ghana  
Total Built Up Area: 7,140m<sup>2</sup>  
Scope Of Work: Turnkey Project





# KHALIL

## BEACH HOUSE

Cardinal directions, cardinal specifications, cardinal charm. To the East rises a blind elevation, and soars with it *an irresistible curiosity to find out what lies behind*. To the West suntan transparent-glaze openings nearby sandy stone skins. An unwinding triplet to celebrate the mesmerizing Mediterranean Sea in its four seasonal facets.





Location: Tyr- South Lebanon  
Total Built Up Area: 2,170m<sup>2</sup>  
Scope Of Work: Turnkey Project

# KHALIL BEACH HOUSE



# the urban



Location: Osu, Accra, Ghana  
 Total Built Up Area: 5,170m<sup>2</sup>  
 Scope Of Work: Turnkey Project

Singularity inside-out, discreet harmony, unpretentious style, flawless practicality, and above all, *a fashionable stylish home for a young rejuvenated heart*. The address is The Urban, an authentic rendition of the city lifestyle. Today, you can luxuriate in an exceptionally modern residence with a signature use of the finest materials. The Urban is, where the heart is.





Location: Airport Residential Area, Accra, Ghana  
 Total Built Up Area: 13,160m<sup>2</sup>  
 Scope Of Work: Turnkey Project



LUXURIOUS BOUTIQUE APARTMENTS

*Exceptional visions* unfold into real inspirations to bring you Iris, charm to your eyes and music to your ears. This architectural piece of art boasts a prime emplacement freed from delimitations, and basks in the glow of lavishness and elegance, gracing you with a divine interpretation of refined touches, matched by a luxurious palette of high-end material in timeless picturesque designs.



Location: Ras Beirut , Beirut, Lebanon  
Total Built Up Area: 2,900m<sup>2</sup>  
Scope Of Work: Turnkey Project

# GREEN RESIDENCE



RESIDENTIAL

Unique will be your journey, for sustainable green has become today a **hallmark of distinguished architecture**. Top-notch apartments boast a bouquet of charms flowing in a stunningly vibrant location. Refined outlines, handpicked finishing material and an eye-catching color palette complete a green approach and a sustainable design for a rare creation.



ARCHITECTURAL GROUP





Location: Airport Residential Area , Accra, Ghana  
 Total Built Up Area: 1600m<sup>2</sup>  
 Scope Of Work: Turnkey Project

## WIENCO GHANA HEAD OFFICE



Elegantly blending in with the distinctive and prominent surroundings of Accra's airport area, stands an innovative premise refined to ingeniously exhibit the professional hallmark. Greenery and natural materials, the construction's signature, make a **stunning impression** while the comfortable indoors naturally lit through transparent glass exude an efficient work-motivated ambience.





Location: Ivory Coast, Abidjan, Riviera  
Total Built Up Area: 9,090m<sup>2</sup>  
Scope Of Work: Design

RESIDENTIAL

## PELICAN GROOVE RESIDENCE



Enviably stylish, expertly incorporated functionality, and the highly sought-after cost-efficiency, along with the finest material and clean straight-lined designs appoint Pelican Groove as a state-of-the art residential destination in Abidjan... *an enriching lifestyle!*



ARCHITECTURAL GROUP





Location: Ivory Coast, Abidjan,  
Zone 4, Rue Dr. Blanchard  
Total Built Up Area: 17,980m<sup>2</sup>  
Scope Of Work: Turnkey Project

## BLANCHARD RESIDENCE

Dollops of serenity and unpretentious *elegance elevate the calibers of style.* Hand-picked designs and premium-quality material exude an air of graceful and chic realm. Comfort remolds luxury, and devotion to simplicity inspire authentic beauty.



# BATIMAT

## CORPORATE



Location: Benin  
 Total Built Up Area: 4,700m<sup>2</sup>  
 Scope Of Work: Design



We relentlessly push the boundaries of innovation, creatively design a distinguished corporate identity, develop a *state of the art branded image*, to set BATIMAT apart from the mass. We assigned our **KEY** assets, dedicated to insightfully maximize the land use, resourcefully integrate a showroom, a head office and a warehouse into a single premise, and comprehensively streamline the operational systems and internal management.



# BATIMAT CORPORATE

Location: Togo  
Total Built Up Area: 13,840m<sup>2</sup>  
Scope Of Work: Design



Location: Agbobbloshie, Accra, Ghana  
Total Built Up Area: 12,340m<sup>2</sup>  
Scope Of Work: Design and Project Management

# PEPSI

## INDUSTRIAL AND WAREHOUSING

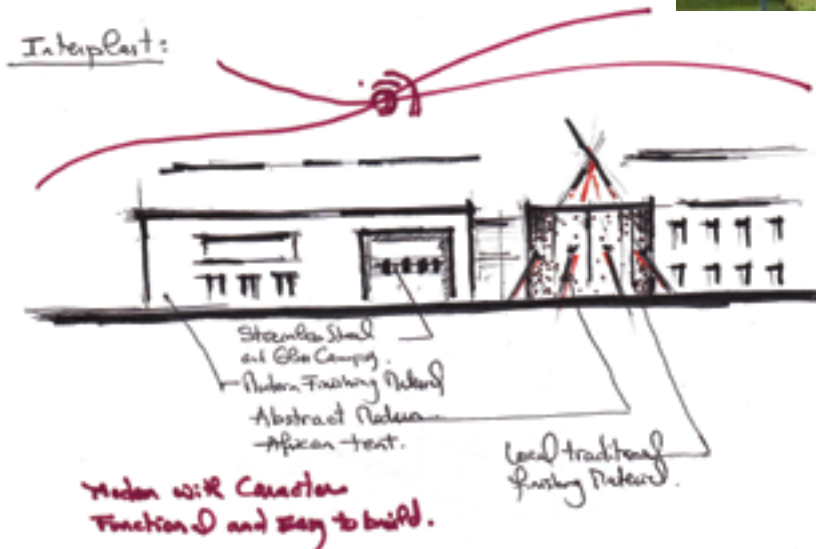
Underpinned by a *cutting-edge expertise* in business, a broad knowledge of modern trends, an insight into marketing strategies, and an efficient approach to human resources management, **KEY** Architectural Group successfully conceives and tastefully designs industrial and logistics facilities imparting a refined image and a world-class work environment.





## INTERPLAST GHANA LTD. FACTORY COMPOUND

*Another milestone is achieved* : perfect technical engineering coordination, detail-focused surveys, and groundbreaking architectural ingenuity. Successfully undertaken & executed, this mixed-use development embraces an unparalleled palette of features accommodating factory buildings, storage warehouses, administration block and residential apartments, an added-value to the business and the life within.



Location: Spintex, Greater Accra, Ghana  
Total Built Up Area: 23,840m<sup>2</sup>  
Scope Of Work: Design and Project Management

Positioned to be a pioneer in sustainable architecture, **KEY** focuses on taking up the efficiency and moderation challenges in conceiving commercial buildings, and advocates functionality and eco-friendly construction. Specialized in designing leading structures and delivering on all commitments, **KEY** sees to cover top-of-the-line design criteria in marketing and sales, logistics, security and safety, cashiers and accounts, management, HR, IT, business development, and customer care.

## PERRISAC ORCA

CORPORATE



Location: Ivory Coast, Abidjan  
Total Built Up Area: 6290m<sup>2</sup>  
Scope Of Work: Design



Location: Yaounde, Cameroun  
Total Built Up Area: 21,150m<sup>2</sup>  
Scope Of Work: Design





# PLATEAUX SAPHIR HOTEL

Location: Ivory Coast, Abidjan, Plateaux  
 Total Built Up Area: 10,500m<sup>2</sup>  
 Scope Of Work: Design



*Inspired by the guests needs* to indulge, and bearing witness of their seasoned tastes, Plateaux Saphir Hotel imparts an art-infused conviviality whereas architecture and design align with the client 's vision of a bespoke location shaping a distinguished service.





# URBANO HOTEL

Where exterior *renovation meets rejuvenation*, improvements redefine the structure's identity, subtle reshaping solutions enliven an urban fabric, all bringing out the genius of an expert eye.

Location: Osu , Accra, Ghana  
 Total Built Up Area: 2,010m<sup>2</sup>  
 Scope Of Work: Turnkey





## NEW MONT GOLD CLINIC AND ERT FACILITY MTN CALL CENTER

Location: Sunyani, Brong Ahafo, Ghana  
 Total Built Up Area: 2,120m<sup>2</sup>  
 Scope Of Work: Design

Another architectural *master-piece that rises up to the challenge* of steering the project from the identification of technical details weighing on the side of functionality, to pushing the outward structure into the mainstream, while exploring the realms of creative harmony!



Location: Tema, Greater Accra, Ghana  
 Total Built Up Area: 3,150m<sup>2</sup>  
 Scope Of Work: Design



With a SKY social and entertainment PAD, dreams and lifestyle land healthfully in this project to create another unique experience. 42 functional residential units designed with extreme care, details of privacy, safety, comfort and sustainability. CANTONMENTS CITY TOWER is our latest ARCHITECTURAL signature!

**Developer: Goldkey Properties Ltd**  
**Function: Residential Tower**  
**Total Build Up Area: 11,080 Sqm**  
**Location: Cantonments City, Accra – Ghana**  
**Scope of work: Design**

RESIDENTIAL

# CANTONMENTS CITY TOWER

RESIDENTIAL

ARCHITECTURAL GROUP



Developer: Blu Properties Ltd  
 Function: Warehouse and Commercial Space  
 Location: Spintex Road, Ghana  
 Total built up area: 1,7501sqm  
 Scope of work: Design and Build



# BLU GATE PLAZA

## WAREHOUSE AND COMMERCIAL SPACE



Focused on merging functionality with style, the **CONCEPT** of **BLU GATE PLAZA** allows for **ADAPTATION** and business **FLEXIBILITY**. This **DESIGN** spans mainly horizontally with attractive vertical **CIRCULATION** elements that contrary to the modern enclosed mall's experience, allows for a more urban **WINDOW-SHOPPING** style one, while emphasizing on a direct engagement with the streets. Always with the **GREEN** element's silhouettes, the project is set to define a **MODERN, ROOTED** luxury with unique **CONTEXTUAL** plan.





Location: Akosombo, Eastern Region, Ghana  
 Total Built Up Area: 9,020m<sup>2</sup>  
 Scope Of Work: Contracting

## THE ROYAL SENCHI WATERFRONT RESORT

**Magazine-chic Senchi:** an organic thought-provoking layout engineered with close attention to specifications and details, and beautifully wrapped with earthy and natural materials, embracing the Volta Lake fanciful waterside.





## THE ROYAL SENCHI WATERFRONT RESORT

The immersive outline conveys serenely the design's intricacies, skillfully implemented & flawlessly built with the high-performance expertise of **KEY** Contracting Ltd.





# ABURI VILLA

PRIVATE HOUSE

Location: Aburi, Eastern Region, Ghana  
Total Built Up Area: 800m<sup>2</sup>  
Scope Of Work: Turnkey Project





# LABONE VILLA

PRIVATE HOUSE

The good Building is not one that hurt the landscape, but one which makes the landscape more beautiful than it was before the building was  
**FRANK LLOYD WRIGHT**

Location: Labone, Accra, Ghana  
Total Built Up Area: 790m<sup>2</sup>  
Scope Of Work: Turnkey Project



Location: West Airport, Accra, Ghana  
Total Built Up Area: 1,280m<sup>2</sup>  
Scope Of Work: Design



## WEST AIRPORT VILLA

### PRIVATE HOUSES

Private as it explores *an unparalleled feel of peacefulness* tailored to the resident's refined taste for privacy. Personalized as it transposes a flawless finishing surpassing the resident's vision of superior comfort. West Airport Villa, an unrevealed node disclosing an outstanding plan and a palette of cutting-edge materials.



Location: Ghazieh - South Lebanon  
 Total Built Up Area: 1,100m<sup>2</sup>  
 Scope Of Work: Turnkey Project



## GHADDAR VILLA

### RESIDENTIAL

Harmonious embraces beautifully meld an exquisite architecture with all the surrounding elements. An oasis of state-of-the-art possibilities unfolds, blending the venture's set-up with the economical setting, the design features with the nature's nuances and the construction's *style with the historical* and cultural subtle distinctions.





Location: Ivory Coast, Abidjan, Deux Plateaux  
 Total Built Up Area: 21,600m<sup>2</sup>  
 Scope Of Work: Design

## PERRISAC II

### MIXED USED PROJECT



Crafting mixed use projects as part of the economical setting is, for architects, an art and a technique: *the exquisite art* of meshing the venture's determined functions with the overwhelming privacy, along the refined technique of preserving the hospitable public accessibility.



Location: Sodeco - Beirut  
Total Built Up Area: 36,370m<sup>2</sup>  
Scope Of Work: Design



# IVO TOWER

## MIXED USED PROJECT

A beautifully-tailored landmark in the heart of the capital, rising high in the prominent vicinity of Sodeco, IVO Tower incorporates an outstanding technical viability, generates a perfect functionality and develops a cosmopolitan feel, revealing another **urban witness** to the monumental rebirth of the city.



MIXED USED

ARCHITECTURAL GROUP





# ZRERIEH VILLA AYNATA VILLA





## DAWHA

### RESIDENTIAL BUILDING



Exploring the ground-breaking *concept* of "Less is More", where the **KEY** for success is to apply a clear and eye-catching design while cleverly managing the operating cost, carefully and skillfully "cutting down" on the construction's finance for medium-income residential projects to "live up" to your aesthetic sensibility and your rewardingly adapted expectations.

Location: Dawha - Lebanon

Scope Of Work: Design & Project Management





Branded and prestigious, *the height of designer chic*... Based on innovation and style, the achievement is insightfully mastered, and the success came along with groundbreaking office spaces combining business-minded professionals and exceptionally-skilled architectural designs.

# Deloitte.

DELOITTE AND TOUCHE / CORPORATE

Location: Ain Mreyse, Beirut - Lebanon  
 Total Built Up Area: 443 m<sup>2</sup>  
 Scope Of Work: Turnkey Project



Today, **Key** prides itself for having achieved a wealth of expertise not only in rigorous and distinctive designs but also in efficient construction and financially informed renovation. With a focus on the client's needs and aspirations, **Key** keeps on thriving, relishing the flow of cutting-edge projects. *A glimpse on the ongoing developments!.*

## MINA AL HOSN 581 WARDIEH BUILDING 1814



The shopping Mall is more of an EXPERIENCE than simple bricks and walls! Inviting, seducing, and tempting that was the RESEARCH background and the design imagination.



MIXED USED

## BLU MINI MALL

MIXED USED



**Function:** Mixed Used  
**Developer:** Blu Properties Ltd  
**Total Build Up Area:** 6,629sqm  
**Location:** East Legon, Accra – Ghana  
**Scope of work:** Design



**HARMONIOUSLY** integrated into the existing environment: **THE TETTEH QUARSHIE COCOA MUSEUM**, was designed to preserve and enhance the **GREEN** elements while celebrating the day of seeding the first **COCOA TREE** in Ghana.

## TETTEH QUARSHIE COCOA MUSEUM

MIXED USED

This **CONTEMPORARY** jewel with **CURVED** architecture offers a multifunctional & **EXPERIMENTAL** spaces to host various events, a museum, a library, an observation deck, a themed restaurant, a chocolate-making workshop and a walk along the **INSPIRATION**.

This **BRAND-NEW, UNIQUE** and **EXCITING** building aims to promote local **CULTURE** and **HIGHLIGHT** the leadership and socio-economic achievements of the country.



**Location: Mampong, Eastern Region-ghana**  
**Total Build Up Area: 3,538sqm**  
**Scope Of Work: Design**



Creating a spectacular window for a daring lifestyle and imagining a frame of breeze, greenery and moments. This is where Architecture should take the **URBAN** living, to a functional and structured environment with a soft and enjoyable character.

## AVA RESIDENCE

RESIDENTIAL

**Developer:** Cornerstone Developments Ltd  
**Function:** Residential Apartments  
**Location:** Cantonments, Ghana  
**Total built up area:** 10,245sqm  
**Scope of work:** Design



Location: Peduase, Eastern Region - Ghana  
Total Build Up Area: 1,465.94sqm  
Scope of Work: Design



Within a **GREEN** surround, At the tip of the **PEDUASE** hill and overlooking the city of **ACCRA**. The Architecture should reflect that context, it should preserve all the **NATURAL** elements with maximum transparency, less details and a reduced footprint.

This is why the look is minimalistic and rather the architecture allows more for picturesque views and the annexed functions were built under the soil to allow for an artificial green hill feature.



## PEDUASE RESIDENCE

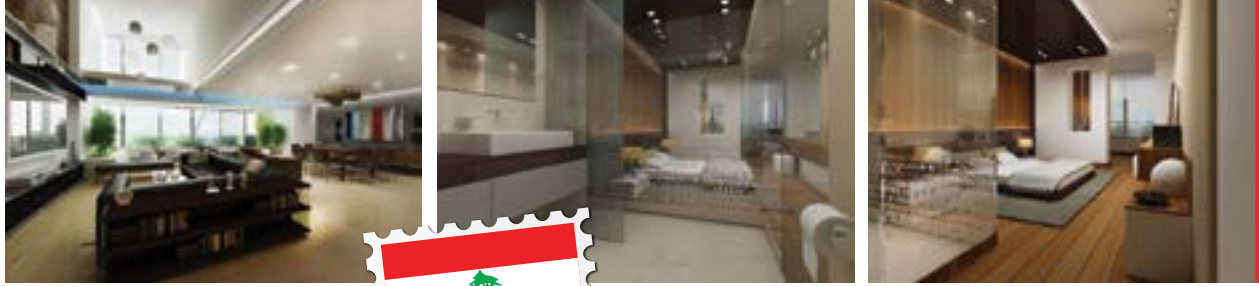
RESIDENTIAL

Location: Batoulay, South Lebanon  
Total Built Up Area: 443 m<sup>2</sup>  
Scope Of Work: Turnkey Project

# FARHAT VILLA

PRIVATE RESIDENTIAL





## SODECO APARTMENT LANDMARK APARTMENT

**KEY** is building up a tasteful portfolio emanating from our passion for design. We create environments that reflect the client's personality and illustrate our unique touch, exquisite taste and attention to detail. *Pleased to show you.*



**KEY** has established its reputation through a wide array of projects, ranging from residential developments to commercial and institutional ventures. From our early years on the market, we were seeing to it that efficiency, elegance, superior quality and the *client's satisfaction* remain the pillars of all our projects. Enjoy the overview on **KEY** previous accomplishments!.

## OLD PROJECTS

### RESIDENTIAL



#### Locations:

- Beirut Homes - Beirut, Lebanon
- Meshref Villa - Meshref, Lebanon
- Fakhry Villa - Zrerieh, Lebanon
- Twins Villa - Tyr, Lebanon





Location: Meshref, Lebanon  
Total Built Up Area: 750 m<sup>2</sup>  
Scope Of Work: Turnkey Project

# KHALIFE VILLA

RESIDENTIAL





**Roots**, a world-class destination, combines the coziness of a private apartment & the luxury of a refined hotel, for a business stay, a special occasion or a family weekend. Limited land & budget constraints are nothing of a hinder to offer the guests prestigious services meshing with their needs and expenses.



Location: Osu, Accra, Ghana  
 Total Built Up Area: 1,280m<sup>2</sup>  
 Scope Of Work: Design





Location: Ivory Coast, Abidjan, Zone 4, Rue de canal  
Total Built Up Area: 2,098m<sup>2</sup>  
Scope Of Work: Turnkey Project

**ROOTS**   
HOTELAPARTMENT



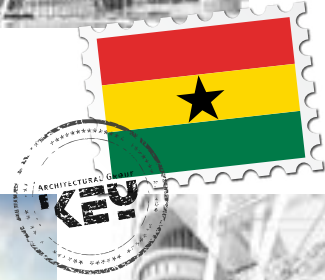
Location:  
Airport Residential Area – Accra, Ghana



PREPROJECT

## THE ADDRESS

MIXED USE OFFICES AND SHOPPING ARCADE



KEY ARCHITECTURAL GROUP



Location: University of Ghana,  
Legon, Accra, Ghana  
Total Build Up Area: 3,082.91sqm  
Scope of Work: Design



## KUFUOR CENTER FOR LEADERSHIP AND GOVERNANCE





Developer: Cornerstone Developments Ltd  
 Location: North Legon  
 Total Build Up Area: 3567.24 sqm  
 Scope of Work: Design & Supervision

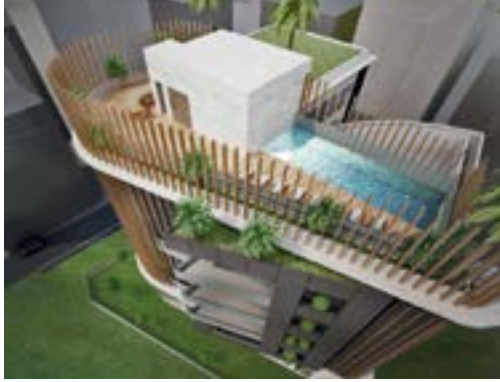
**Altitude**  
 Residence



### ALTITUDE RESIDENCE:

A hideaway skillfully designed to appeal to the most refined tastes, with a unique architecture that draws the eyes and a chic meticulously-tailored interior that captures the hearts. A vibrant address secluded within a lush greenery, a residence instilling serenity through a bright color palette and a sleek decoration, an unparalleled altitude towards distinction.





## SWITCH BACK ROAD

### RESIDENTIAL

For every concept, we have a brand new story because every project has its own recipe based on its location, context and client's expectations!

At this point of a corner land, our designs exceed the architectural realm to "urban". We value and admire the corner. Hence; we wrap it with impeccable character



**Location: West Cantonments**  
**Total Build Up Area: 5.775 sqm**  
**Scope of Work: Design and Build**





## KIA APARTMENT

### RESIDENTIAL

Although a more compact land, we pushed intensively to its maximum use. We thoroughly outlined staggered boxes that proceeded to create terraces and green roof tops.

The outcome of this approach are functional boxes flourished with elegance and flair



**Location: Airport, Ghana**  
**Total Build Up Area: 4420 sqm**  
**Scope of Work: Design**

For our clientele's detailed vision of a timeless residence, we strived around elegance, opulent spaces, units of clarity and a simple, yet sophisticated finishing palette.

Ushering directly into the effervescent outdoor living lounges with leafy effects is the radiantly designed reception domain which extends to an impressive arcade.



## CANTONMENTS VILLA

RESIDENTIAL



**Location: Cantonments, Accra – Ghana**  
**Total Build Up Area: 5.775 sqm**  
**Scope of Work: Design and Build**

The significance of education and compulsion to extend aesthetic architectural to scholastic projects inspired the design of this edifice. The project is carefully constructed with state of the art labs, research blocks and spacious classrooms while education extends to the indoor and outdoor areas.

The hanging amphitheater structured with architectural volumetrics & adorned with copper "adinkra" characters provides the venue for periodic cultural related events and other festivities.

## FANKA COLLEGE

CORPORATE

**Location:** Airport Residential, Accra – Ghana  
**Total Build Up Area:** 5860.56 sqm  
**Scope of Work:** Design





## BESPOKE OFFICES

CORPORATE



**Location: Airport, Ghana**  
**Total Build Up Area: 8,730.37sqm**  
**Scope of Work: Design**



Secluded office building with terrific architectural volumetrics, harmoniously situated between two residential properties.

This office space projects a sage green backdrop extension in a professional, tranquil, human environment.



From a **GOLDEN** rectangular plan, to a perfectly **PROPORTIONED** prism! We **DECONSTRUCT** static volumetric to three dimensional compositions, **CRAFTED** with functions, greenery and details to **INITIATE** meaningful Architecture that travels beyond palettes of colors and materials!

The **AURA's** Architecture should add, every day, positive and vibrant **AURA** to its occupants and neighborhood!



**Location:** Cantonments, Ghana  
**Developer:** Cornerstone Developments Ltd  
**Total Build Up Area:** 5,638.75sqm  
**Scope of Work:** Design





When it comes to private residences, **KEY** offers a distinctive array of concepts that suit every culture! A great balance between design and visuals and a touch of sophistication in the most simplified style.

## CANTONMENTS TWIN VILLAS

RESIDENTIAL



**Location:** Cantonments, Accra – Ghana  
**Total Build Up Area:** 1,960.71sqm  
**Scope of Work:** Design



Maintaining our reputation as leaders in sustainable architecture, KEY has provided an opportunity for beauty to flourish in one of Accra's busiest areas. Allowing an exclusive take on geometric designs to dance with natural silhouettes to create a perfectly elegant lifestyle; creating an unmatched personality in which families can value luxurious, relaxing living while being constantly inspired in a refined environment.

**Developer:** OP Properties Ltd  
**Function:** Townhouses  
**Location:** Spintex- Accra, Ghana  
**Total built up area:** 11,472.85 sqm  
**Scope of work:** Design

RESIDENTIAL

## THE ARK RESIDENCES



ARCHITECTURAL GROUP





# THE ARK MIXED-USE

**Developer: OP PROPERTIES LTD**

**Function: Mixed-Use**

**Location: Asokwa, Kumasi- Ghana**

**Total Build Up Area: !!!! sqm**

**Scope Of Work: Design, Remodel and Build**

Reimagine **THE ARK** in Kumasi, Ghana-a decade-old mixed-use development undergoing a modern transformation. Our design ethos seamlessly integrates local character with contemporary fluidity, crafting a welcoming space that houses a stylish, functional, and sustainable medium-end hotel. Expertly curated with modern and sustainable design accents, **THE ARK** reflects a harmonious blend of energy efficiency, versatile spaces, and vibrant cultural influences.





Encapsulating Ghana's ideal future in the present is best done through a modest fusion of wooden pergola, classy finishing and the preservation of **70-year-old trees**. Uniquely efficient land use allows easy access and captures the vibrant and futuresque landscape that fastens around the residences perfectly, creating a crossroads between **aesthetic elegance, safety and comfort** in each home.

## RINGWAY ESTATE

### RESIDENCES

Each villa possesses its own private pool deck acting as a terrace for a breath of fresh air and a change of scenery. Additionally, each home features a private pool and cozy backyard suitable for refined living.



**Developer:** Blow Group Ltd  
**Function:** Townhouses  
**Location:** Ringway – Accra, Ghana  
**Total built up area:** 6,981 sqm  
**Scope of work:** Design

The epitome of architectural intellect comes from the ability to draw inspiration and utilize natural forms as a material resource. This resort-like residence harmonizes elegant living and nature, promoting sustainability particularly in this evolving world. Utilizing simple, smooth shapes, along with wooden details, the surrounding aesthetic is lavishly complimented to create flow between human and natural elements and maintains equilibrium with the mesmerizing view.



**Function: Private house**  
**Location: Fetteh, Ghana**  
**Total built up area: 2,335 sqm**  
**Scope of work: Design**

## BEACH HOUSE RESIDENCES



**MJC** is a mixed-use project with a perfect scale which is supposed to define perfect developments in **OSU**, an area that is considered, the downtown of **Accra**.



# MJC

MIXED USE



While the residential block provides full privacy on both levels, the **FUNCTIONAL** and the **ARCHITECTURAL** design, the other corner block incorporates shopping, business & entertain -ment activities and with an **INVITING** approach, the Ground Floor Piazza **MERGES** with the road side **PEDESTRIAN** walkways, a **CREATIVE** attempt to reclaim the **SOCIAL** role of the **COEXISTENCE** between the private and public **REALMS**. This **CONTRAST** in the carefully initiated **DESIGN EXPRESSION** of the two blocks, is that **CHAOS** that creates **JOY** and sometimes **LOVE!**



**Function: Mixed Use Project**  
**Location: Osu, Ghana**  
**Total built up area: 9,080 sqm**  
**Scope of work: Design**





Gazing into the future, a large emphasis on sustainability in architecture, with a focus on natural preservation, while maintaining luxurious minimalism will highlight the benchmark of architectural reputation. Stepping outside the normal and looking at new perspectives through an emphasis on geocomplexity exudes confidence to call for a fashionable, urban lifestyle.

## TOG RESIDENCE

**Developer:** Western Rod and Wire Ltd  
**Function:** Residential Apartments  
**Location:** Osu - Accra, Ghana  
**Total built up area:** 3,968 sqm  
**Scope of work:** Design





## PEDUASE VILLA

### RESIDENCES

Traditional concepts meet contemporary approaches! Engraved into the mountain to design a structure that fits purposefully within the topography and the organic landscape. This residence features a scenic view of Accra in all the rooms throughout the villa and shows off the balance between traditional architectural approaches with the wooden, stone and cement-based materials and contemporary silhouettes. Enables the villa to communicate modernity and antique language, through contextual architecture.



**Function:** Private house  
**Location:** Peduase, Aburi, Ghana  
**Total built up area:** 1,300 sqm  
**Scope of work:** Design and Built

Uniquely shaped with its character and fine edges, **BEYOND** is designed to embrace a spacious realm made up of **exquisitely** illustrated **cantilevers** that provide culturally inspired Architectural features, while portraying its meticulously engineered & self-sustaining shading elements. This aspect gave room for transparency and naturally lit living spaces while touching on green definitions of beauty.

This project was **conceptualised** to preserve a cluster of **50-years-old** beautiful trees carefully incorporated in the overall landscaped courtyards, terraces and elevations. And in a statement like, this experiment ensures that lifestyle, **luxury**, development and sustainability can coexist to create **long-lasting** synergies of wellbeing.

# BEYOND

RESIDENCE



**Developer:** F & F Development Limited  
**Function:** Residential Apartments  
**Location:** Airport Residential Area, Ghana  
**Total built up area:** 7,250 sqm  
**Scope of work:** Design and Build



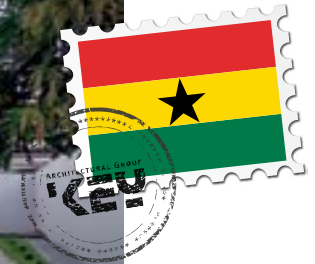


## CORAL SHOWROOM



**Location:** North Kaneshie  
**Total Build Up Area:** 2,012.44 sqm  
**Scope of Work:** Design and Supervision

A vast branded paint outlet with minimalistic design, yet enchanting with a professional surround. This is the ultimate customer-care address, immersed in a charming greenery that imparts positivity, embracing a distinctively vibrant internal patio.



Think **Futuristic Architecture**. Think **The Stay**. Embracing colours, and concepts of our future, such as vertical gardens to promote fresh air and sustainability within the community, **The Stay** is an embodiment of sophistication that exudes class. Whether it be the meticulously calculated edges that provide shade and improve gradation, or the array of positioning used to blend the structure seamlessly, **The Stay's** exterior displays a magnetic presentation that radiates and allows it to stand out in its surrounding environment and takes on an alternative perspective on architecture. The interior does just as much in harmonising the importance of spaciousness, comfort and easy accessibility within a household with aesthetic extravagance.

**Developer: F&F Development Ltd.**  
**Function: Residential Apartments**  
**Location: Côte d'Ivoire, Abidjan**  
**Total built up area: 480 sqm**  
**Scope of work: Design**



**THE STAY**  
 I M M E U B L E



BOUTIQUE APARTMENT  
**BLISS**



RESIDENTIAL



**BLISS** concept, seeks to develop a building as a sanctuary, providing a sense of rejuvenation and relaxation, helping to generate the energy and privacy necessary to promote personal growth and serene living. Through the choices of fine edges, smooth curves, soft colours and natural preservation, the U shape master plan gives careful consideration to the specification of sustainable building materials and details along with precise layering to ensure a **PASSIVELY** designed manageable environment where **HEAT TRANSMISSION** is minimized and **NATURAL LIGHTING** and **VENTILATION** is maximized.



**Developer:** H & F Realty Limited  
**Function:** Residential Apartment  
**Location:** Labone, Ghana  
**Total built up area:** 6462.82 sqm  
**Scope of work:** Design

ARCHITECTURAL GROUP



Strongly distinct from its surroundings, and perfectly symmetrical to trendy international corporate workspaces, the ALUTRADE Main Office incorporates the diverse colours of its landscape, and fuses it with abstract shapes that portray a futuristic brand. Exuding extraordinary combinations of these simple shapes allows this office to open doors for a professional ambiance where precision and attention to details are taken into consideration.

## ALUTRADE MAIN OFFICE

**Client:** ALUTRADE Ghana  
**Function:** Office Building  
**Location:** South Industrial Area, Ghana  
**Total built up area:** 1,958sqm  
**Scope of work:** Design



# MULBERRY

## RESIDENCES



Blending style, comfort and function to create elegant living, **The Mulberry** simplifies its luxury to compliment a diverse range of tastes. In their hearts, the villas push beyond a sense of isolation, to confess a unique master plan that offers privacy, while enhancing public spaces and the community experience. Designed with an urban planning background that privileges vistas, landmarks and contextual concepts; this environment provides heightened perceptions of well-being & relaxation, accompanied by a bold signature character.





**Developer: Magnolia Realty Ltd**  
**Function: Townhouses (villas)**  
**Location: Cantonments, Accra, Ghana**  
**Total built up area: 33,546 sqm**  
**Scope of work: Design & Supervision**



# MULBERRY RESIDENCES

Distinctively designed with a bold, yet graceful personality, **The Emilean** embodies Accra's rich, energetic and young character through its sophisticated curves and vibrant glow. In specific, the curves stem from the shape of the land, allowing The Emilean to effectively flow within its atmosphere while exuding its unique ambiance. With this extraordinary combination of minimalist pattern, the architecture of this residence is truly an art, placing an emphasis on comfortable living along with prioritising functionality; as well as style. Both the exterior and interior of **The Emilean** tell stories of modernity & opulence; questioning "what could be" in the future of residential luxurious architecture rather than looking back at common and out-of-date aesthetics while allowing green spaces to promote sustainable living in an urban environment.

*Emilean*  
RESIDENCE

**Client: F&F Development Ltd.**

**Function: Residential Apartments**

**Location: Cantonments - Accra, Ghana**

**Total built up area: 3,200sqm**

**Scope of work: Design and Built**



Developer: AK Realty and Investment  
Function: Residential Apartments  
Location: Airport Residential Area  
Total built up area: 21,331 sqm  
Scope of work: Design



# THE SUMMIT RESIDENCES

## STATELY, GREEN, MODERN, FUNCTIONAL

Are some of the **KEY** words of a refined brief for the design of this **EXCLUSIVE** project, set to be elevated on Patrice Lumumba Street in the prominent **Airport Residential area of Accra**.

With an approach that builds on the **SYNERGIES** between the Architectural and the Urban, **THE SUMMIT** is conceptualized to escalate a more dramatic emphasis on **LIFE STYLE** venues, in order to create **LIVELY** animated silhouettes.

From the **SCULPTURAL** touch of the pool, its **LUCHLY** landscaped terraces, to the **SPACY** volumetric of the penthouses Cantilevers, **ARCHITECTURE** is set to be **WELCOMING** and **AVANT-GARDE**.



# ABUAKWA

GOLF COURSE



Discover a harmonious blend of organic design and tropical landscape at our **golf course** concept in Ghana's Eastern Region. Inspired by the **curvy movement** of the game & the **natural terrain**, our architecture seamlessly integrates with the soft hilly surroundings. Earthy materials sourced from the location enhance the aesthetic appeal while promoting sustainability.

ARCHITECTURAL GROUP





Developer: Imperial Homes Limited  
Function: Golf Course  
Location: Abuakwa, Eastern Region - Ghana  
Total built up area: 14,789 sqm  
Scope of work: Design

## ABUAKWA GOLF COURSE

The **clubhouse**, golf lodge, and entertainment space form a functional **yet artfully** designed ensemble, providing a holistic and **memorable experience**. This unique address transcends traditional norms, capturing the **essence** of the game and the natural beauty of the region.





Developer: i2 Development Ghana Ltd  
Location: Airport City, Accra- Ghana  
Total Build Up Area: 128,933 sqm  
Scope of Work: Design

RESIDENTIAL

## PRESTIGE RESIDENCES



Presenting **PRESTIGE**, a captivating urban masterpiece strategically positioned at the crossroads of two primary arteries & a secondary vein.

Nestled near **KOTOKA** International Airport, this architectural gem transcends convention, marrying fluidity and functionality with a timeless aesthetic.

Each block gracefully interacts with air and light, forming a harmonious special composition. As custodians of a dream, we've designed more than a structure; we've crafted an identity for Accra.

Beyond visual appeal, **PRESTIGE** rests on a tropically landscaped platform, creating a sustainable realm where privacy meets public spaces.

Welcome to **PRESTIGE** a symbol of Accra's vibrancy and history, where architecture becomes a narrative, and a city's legacy takes shape.



ARCHITECTURAL GROUP

KEA



## ASC VILLA RESIDENCES

Experience the epitome of luxury living in this uniquely conceptualized private residence. Seamless integration with nature is achieved through abundant natural light, strategic shades, and lush greenery. Functional spaces flow effortlessly, from the industrial-inspired basement gym to the multi-functional main garden level. The first floor offers well-shaded family spaces, while the second floor boasts a spectacular club-like roof terrace. A distinctive feature is the artistically free-standing mosque, showcasing cultural sensitivity. This architectural masterpiece effortlessly blends modernity, class, and culture, creating a residence that transcends expectations.

**Function:** private residence  
**Location:** Cantonments - Accra  
**Total built up area:** 1030 sqm  
**Scope of work:** Design



KEU

25  
Years

Design of the Brochure:  
[www.RabihDou.com](http://www.RabihDou.com)

Beirut, Lebanon

Al Murjan Bldg., Bir Hassan

T/F: +961 1 821459 | +961 1 826586

Mobile: 961 3 829351

Accra, Ghana

H/No. 83, Klotey Crescent, Labone, Accra-Ghana

T/F.: +233 302 798 005 | 006 Mobile: +233 24 4 566 566

Abidjan, Ivory Coast

Marcory, Zone 4, Rue Thomas Edison, Résidence Sache, 11 BP 2727 Abidjan 11

T. : +225 212 547 22 | Mobile: +225 08 05 03 52

[www.keyarchitect.com](http://www.keyarchitect.com)



25 Years